

SW<sup>®</sup>4S



*Pinotti*

# ANY JOB, ANY SEASON VERSATILITY



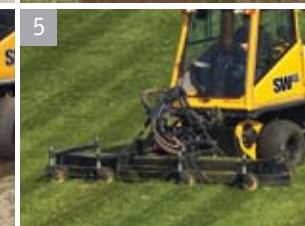
A year-round working machine that converts from tracks to wheels as needed.

- A microcontroller combined with a full color display manages the Tier 3 Perkins turbo-diesel engine and the vehicle's hydrostatic transmission to ensure maximum performance.
- The ergonomically designed and insulated cab complies with R.O.P.S. standards and provides a superior working environment for the operator.
- Optional air conditioning offers even greater comfort.
- And improved access allows easier vehicle maintenance.

**SUPERIOR WINTER PERFORMANCE WITH FOUR SEASON VERSATILITY! IT'S THE SW<sup>®</sup> 4S.**

## ATTACHMENTS FOR OTHER SEASONS

- 1 Angle broom
- 2 Tiller
- 3 Grader rake
- 4 Power rake
- 5 Articulated mower
- 6 Cold planer
- 7 Pallet fork





## ATTACHMENTS FOR ALMOST ANY JOB

# AS EASY AS 1-2-3!

### ONLY 3 EASY STEPS:



Remove tracks, drive sprockets and wheels.

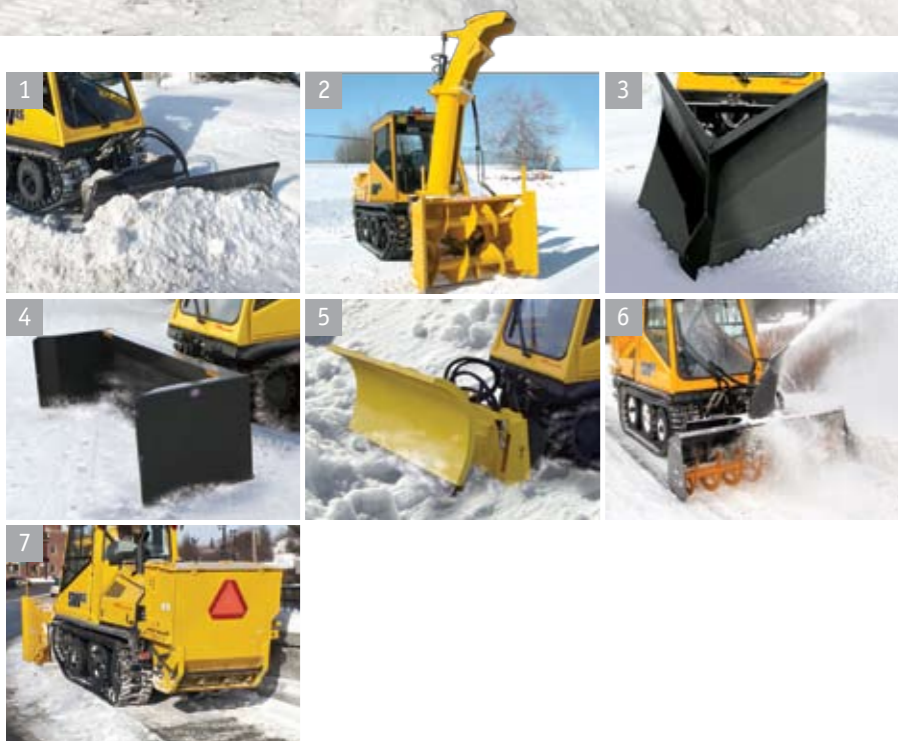


Remove rear suspensions, adjust front suspensions and install sprockets.



Install drive chains and front wheels. Bolt on the rear wheel assembly. Connect the hydraulics and run the auto-calibration function.

### NOW ENJOY YOUR SUMMER!



### WINTER ATTACHMENTS

- 1 Heavy-duty snow blade
- 2 Heavy-duty snow blower
- 3 V-plow
- 4 Snow pusher
- 5 Snow blades (several widths available)
- 6 Single auger snow blower
- 7 Salt and sand spreaders (rear mount)

A quick-attach system allows the SW 4S to be equipped with a wide variety of standard skid-steer implements to handle almost any task in any season.

### AND MORE TO COME!

Get the superior performance of PRINOTH equipment in winter but never store the vehicle because there's no summer vacation for the SW 4S! It earns its keep all year long.





PERKINS engine, model 1104D.  
The color gray is used only for illustration purposes.

## TIER 3 EPA Certified

The EPA-certified engine is installed, tested and integrated with the entire vehicle. PRINOTH's commitment to exceptional quality results in a vehicle that meets EPA Tier 3 standards.



The SW 4S's microcontroller brings it all together. Fully compatible with the engine's J1939 communication protocol, it understands the language of the engine, operator and machine to achieve maximum performance and safer working conditions.

## SPECIFICATIONS

DIMENSIONS		
<b>Overall length</b>		
basic vehicle	3 175 mm	125 in
w/HD straight blade	4 039 mm	159 in
w/V-plov	4 648 mm	183 in
w/HD snowblower	4 217 mm	166 in
w/HD snowblower & sandspreader	4 745 mm	187 in
w/HD straight blade & sandspreader	4 674 mm	184 in
<b>Overall width</b>		
track mode	1 285 mm	50.5 in
wheel mode w/turf tires	1 700 mm	67 in
wheel mode w/side walk tires	1 346 mm	53 in
<b>Overall height</b>		
track mode	2 337 mm	92 in
wheel mode	2 375 mm	93 in
<b>Ground clearance</b>	249 mm	9.8 in
PERFORMANCE		
<b>Maximum speed</b>	30 km/h	19 mph
<b>Turning radius</b>		
track mode	0 m	0 in
wheel mode	1.22 m	4 ft
<b>Weight</b>		
w/tracks	3 080 kg	6 790 lb
w/tracks & HD straight blade	3 284 kg	7 240 lb
w/tracks & HD snowblower	3 733 kg	8 230 lb
w/tires	2 810 kg	6 200 lb
ENGINE		
<b>Make</b>	Perkins	
<b>Model</b>	1104D-E44T	
<b>Type Turbo</b>	Turbo diesel, electronic fuel system, EPA Tier 3	
<b>Number of cylinders</b>	4	
<b>Displacement</b>	4.4 L	269 in <sup>3</sup>
<b>Power @ 2500 rpm</b>	74 kW	99 hp
<b>Torque @ 1400 rpm</b>	420 N•m	310 ft•lb
<b>Engine block heater</b>	750 W	
<b>Glow plug starting aid</b>	Yes	
POWER TRAIN		
<b>Make</b>	Sauer-Danfoss Series 90	
<b>Hydrostatic pumps</b>	Sauer-Danfoss Series 90	
<b>Hydrostatic motors</b>	Parker	

CONTROL	
<b>Type</b>	Microcontroller with color display
<b>Characteristics</b>	Steering wheel, progressive F-N-R lever. Speed pedal. Anti-stall and auto-calibration.
ELECTRICAL	
<b>Voltage</b>	12
<b>Alternator</b>	85
<b>Battery</b>	950 CCA

SUSPENSION	
<b>Front</b>	Adjustable air bellows with hydraulic damper
<b>Rear</b>	Tandem

TRACKS	
<b>Type</b>	Endless rubber track reinforced with steel wire
<b>Width</b>	350 mm 13.8 in
<b>Tensioner</b>	Grease actuated cylinder

CHASSIS	
<b>Type</b>	Toboggan welded with access panels. Ready for wheel kit installation.

CAPACITIES		
<b>Cooling system</b>	12 L	3.1 U.S. gal
<b>Fuel tank</b>	120 L	32 U.S. gal
<b>Engine crankcase</b>	7 L	1.8 U.S. gal
<b>Hydrostatic tank</b>	19 L	5 U.S. gal
<b>Hydraulic tank</b>	22 L	5.8 U.S. gal

HYDRAULICS	
<b>Rear (standard)</b>	Hydraulic system for salt and sand spreader Variable flow max 11.7 l/min (3 GPM)
<b>Front (optional)</b>	High flow front hydraulics setting is 25 GPM @ 3000 PSI (Max. setting 33 GPM @ 6000 PSI upon special request)

QUICK-MOUNT ATTACHMENT SYSTEM (OPTIONAL)	
<b>Quick-mount attachment system</b>	SAE "skid steer" with tilt cylinder

CAB	
One-person insulated cab with integrated roll over protective structure (R.O.P.S. ISO 3471) certification	Signal light system
Electric power tilt	Rear windshield defroster
3- point seat belt	Cab noise insulation
Adjustable suspension seat	1 rear halogen light
Heater-defroster with adjustable temperature, fan control and fresh air intake	Brakes and parking lights
Front windshield wiper with washer with intermittent switch	Beacon light with protective guard
Rear windshield wiper	Electric joystick for front implement control
Dome lamp and dash light	Radio AM/FM-CD stereo with speakers
2 front halogen lights with flashers	Cab access step

OTHER EQUIPMENT ( STANDARD )	
Horn, emergency/parking brake with automatic application upon door opening, back-up alarm, parts, service & operator's manuals	

MICROCONTROLLER DISPLAYS		
<b>Gauges &amp; Indicators</b>		<b>Warnings lights and buzzers</b>
Hour meter		High engine temperature
Fuel level		Engine oil low pressure
Tachometer		High hydrostatic temperature
Hydrostatic oil temperature		Hydrostatic low oil level
Neutral indicator		Parking brake indicator
Engine oil pressure		Low fuel level
Engine coolant temperature		Engine and transmission fault
Voltmeter		<b>Warning lights</b>
Winter or summer switch		Parking brake indicator
		Transmission neutral position
		Engine warning light
		Engine "wait to start" light
		Engine stop light
		Low battery voltage

AIR CONDITIONING (OPTIONAL)	
<b>Roof mounted with adjustable temperature, fan control and fresh air intake</b>	22 000 BTU

© 2009 PRINOTH Ltd. All rights reserved. ® and TM are trademarks of PRINOTH Ltd. PRINOTH Ltd. reserves the right to change or discontinue any specifications, designs, features, models or accessories shown or indicated without notice.



To find a PRINOTH dealer:  
[www.prinoth.com](http://www.prinoth.com)



PRINOTH AG  
Brennerstrasse 34  
I-39049 Sterzing (BZ)  
Tel. +39 0472 72 26 22  
Fax +39 0472 72 26 18  
prinoth@prinoth.com

PRINOTH Ltd.  
1001 J.-A.-Bombardier Street  
Granby, Quebec, Canada, J2J 1E9  
Phone: 450.776.3888  
Fax: 450.776.6030  
utilityvehicles@prinoth.com



Reliability pays off.  
Keep your vehicle reliable with certified OEM parts!