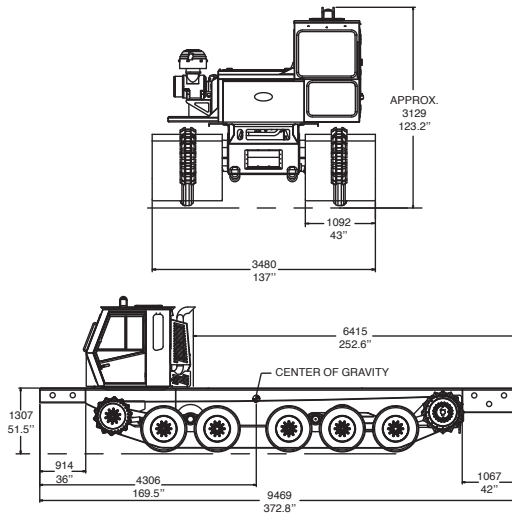


# GO-TRACT™ 4500



*Pinotti*



## DIMENSIONS

|                                  |          |          |
|----------------------------------|----------|----------|
| Overall length without extension | 7 488 mm | 295 in   |
| Overall width                    | 3 480 mm | 137 in   |
| Overall height                   | 3 043 mm | 119.8 in |
| Ground clearance                 | 533 mm   | 21 in    |

## PERFORMANCE

|                             |           |           |
|-----------------------------|-----------|-----------|
| Curb weight (basic vehicle) | 15 678 Kg | 34 563 lb |
| Payload                     | 20 865 Kg | 46 000 lb |
| Maximum speed               | 9.6 km/h  | 6.0 mph   |
| Fording depth               | 1321 mm   | 52 in     |
| Turning radius              | 0 m       | 0 ft      |

## Ground pressure (no penetration)

|                |                       |         |
|----------------|-----------------------|---------|
| Basic vehicle  | 155 g/cm <sup>2</sup> | 2.2 psi |
| Loaded vehicle | 360 g/cm <sup>2</sup> | 5.1 psi |

## Ground pressure (6 in. Penetration)

|                |                       |         |
|----------------|-----------------------|---------|
| Basic vehicle  | 135 g/cm <sup>2</sup> | 1.9 psi |
| Loaded vehicle | 310 g/cm <sup>2</sup> | 4.4 psi |

## Gradeability

|                   |     |       |
|-------------------|-----|-------|
| Uphill / Downhill | 60% | 31.0° |
| Sidehill          | 40% | 21.8° |

## ENGINE

|                     |                                      |                     |
|---------------------|--------------------------------------|---------------------|
| Make                | Caterpillar                          |                     |
| Model               | C-9                                  |                     |
| Type                | Turbo diesel, electronic fuel system |                     |
| Emission Standard   | EPA Tier 3 and EU Stage IIIA.        |                     |
| Number of cylinders | 6                                    |                     |
| Displacement        | 8.8 L                                | 537 in <sup>3</sup> |
| Power @ 2200 RPM    | 280 kW                               | 375 hp              |
| Torque @ 1400 RPM   | 1 668 N•m                            | 1 230 lb•ft         |

## TRANSMISSION

|                    | Make               | Type                         |
|--------------------|--------------------|------------------------------|
| Pump drive         | Funk               | Triple pads                  |
| Hydrostatic pumps  | Sauer-Danfoss      | Axial, variable displacement |
| Hydrostatic motors | Bosch-Rexroth      | Axial, variable displacement |
| Planetaries        | Oertikon Fairfield |                              |

## CONTROL

|               |   |
|---------------|---|
| Type          | Microcontroller with color display  |
| Inputs        | Steering wheel, progressive forward-neutral-reverse lever and speed pedal |
| Outputs       | Independent control of each track   |
| Other feature | Anti-stall  |

## ELECTRICAL

|                  |             |
|------------------|-------------|
| Voltage          | 12 V        |
| Alternator       | 145 A       |
| Battery capacity | 3 X 950 CCA |

## SUSPENSION

|      |              |
|------|--------------|
| Type | Walking beam |
|------|--------------|

## WHEELS

|            |           |
|------------|-----------|
| Quantity   | 10        |
| Type       | Solid     |
| Dimensions | 8.25 X 20 |

## TRACKS

|           |                             |       |
|-----------|-----------------------------|-------|
| Type      | D-Dent, Hardened Steel      |       |
| Width     | 1 092 mm                    | 43 in |
| Belt      | Rubber, 7-ply               |       |
| Tensioner | Cylinder filled with grease |       |

## CHASSIS

|               |     |
|---------------|-----|
| Type          | Tub |
| Drain plug    | Yes |
| Access panels | Yes |

## CAPACITIES

|                  |       |            |
|------------------|-------|------------|
| Cooling system   | 38 L  | 10 US gal  |
| Fuel tank        | 455 L | 120 US gal |
| Hydrostatic tank | 63 L  | 16 US gal  |

## PROVISION FOR EXTRA HYDRAULIC PUMP

|                       |                                  |
|-----------------------|----------------------------------|
| Location              | Top pad on triple pump drive     |
| Flange type           | SAE B - 4 in dia. pilot          |
| Shaft type            | SAE B - 13 teeth, 16/32 pitch    |
| Direction of rotation | CCW (when looking at pump shaft) |
| Max rotational speed  | 3 058 rpm                        |

## OPTIONAL EQUIPMENT

- Heavy duty brushguards
- Rear pintle hook
- External mirrors (heated available)
- Winch
- Arctic package
- High flow hydraulic capabilities for: drills, cranes, knuckle booms, man lifts, digger derricks, backhoes and many accessories
- Amber beacon light
- Remote controlled directional spotlight
- Electronic inclinometer
- Air conditioning

## EPA-CERTIFIED

The EPA-certified Caterpillar engine is installed, tested and certified in conjunction with the entire vehicle. PRINOTH's commitment to exceptional quality results in this utility vehicle line-up that meets EPA Tier 3 standards.



©2009 PRINOTH Ltd. All rights reserved. ® and TM are trademarks of PRINOTH Ltd. PRINOTH Ltd. reserves the right to change or discontinue any specifications, designs, features, models or accessories shown or indicated without notice.

